



CellStain[®]

LINEAR AUTOMATED STAINERS

FOR EXCELLENT RESULTS
IN CELL STAINING

- > Bacteriology
- > Haematology
- > Histology
- > Microbiology
- > Cytology
- > and many more



CellStain®

EFFICIENT AND FLEXIBLE

The reliable partner for your laboratory

CellStain® automated stainers from THARMAC® combine all of the key aspects of effective laboratory work in a single device:

- QUALITY** Thanks to established staining protocols, **CellStain®** delivers flawless staining quality with superlative reproducibility
- FLEXIBILITY** Thanks to custom programming options, **CellStain®** automated stainers always adapt to the needs of a modern laboratory
- TIME** Thanks to walk-away technology, **CellStain®** automated stainers allow you take the next step towards automation
- SPACE** Thanks to their compact size, **CellStain®** automated stainers require only a small amount of space
- COSTS** Thanks to their low price, **CellStain®** automated stainers are cost-effective even with a relatively low sample throughput

The **CellStain®** series comprises four models:

CellStain® 6



CellStain® 15



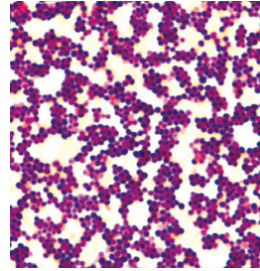
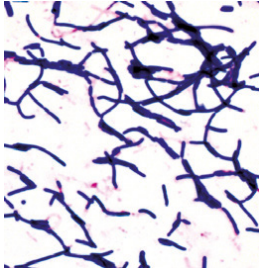
CellStain® 23



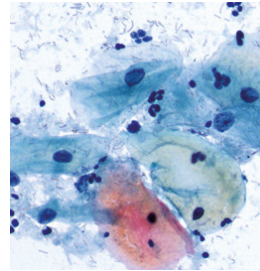
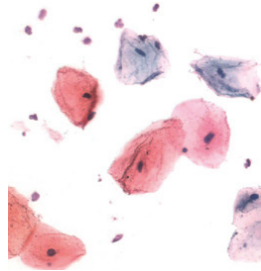
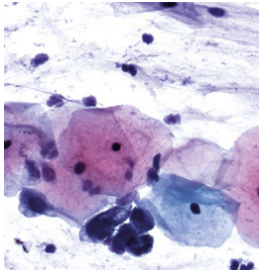
Staining results

With **CellStain**[®] automated stainers

GRAM-STAINING:



PAP-STAINING:



CellStain® 6

Areas of application for the CellStain® 6

HAEMATOLOGY

Staining of blood and bone marrow according to:

- › May-Grünwald
- › Giemsa
- › Wright
- › Pappenheim
- › Leishman

BACTERIOLOGY

- › Gram staining
- › Fluorescence staining and cold staining of Mycobacterium tuberculosis

Advantages that impress

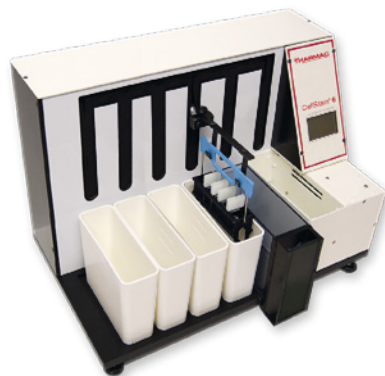
- › Programming security thanks to password-protected access
- › Low transfer of reagents through the slide holder
- › Freely selectable agitation and drip off time to further minimise the transfer of reagents
- › Performance of various staining operations by moving the slideholder forwards and backwards
- › Small format of the stainer fits under any fume hood
- › Optional drying station with programmable temperature available
- › Optional water rinsing station
- › Optional fume hood with activated charcoal filter

Equipment

- › 6 staining stations
- › Slide holders for 20 or 30 slides
- › 6 cuvettes (standard) for 500 ml with cover
- › Memory slots for customised programming
- › 1 optional drying station
- › 1 optional water rinsing station

Technische Daten

- › Dimensions and weight: 55 x 34 x 28 cm (W x H x D), approx. 15 kg
- › Safety: CE/IVD
- › Voltage: 208-240V/50Hz



CellStain® 15

Areas of application for the CellStain® 15

PAPANICOLAOU STAINING

Advantages that impress

- › Programmable for individually configurable steps in the staining, rinsing and drying station
- › Programming security thanks to password-protected access
- › Low transfer of reagents through the slide holder
- › Freely selectable agitation and drip off time to further minimise the transfer of reagents
- › Performance of various staining operations by moving the slide holder forwards and backwards
- › Optional drying station
- › Optional water rinsing station
- › Optional fume hood with activated charcoal filter

Equipment

- › 15 staining stations
- › Slide holders for 20 and 30 slides
- › 15 cuvettes (standard) for 500 ml with cover
- › Memory slots for customised programming
- › 1 optional drying station
- › Optional water rinsing station

Technical specifications

- › Dimensions and weight: 95 x 35 x 28 cm (W x H x D), approx. 16 kg
- › Safety: CE/IVD
- › Voltage: 208-240V/50Hz



CellStain® 23

Areas of application for the CellStain® 23

FEULGEN STAINING

- › DNA image cytometry
- › DNA karyometry

HE STAINING

PAPANICOLAOU STAINING

Advantages that impress

- › Programmable for individually configurable steps in the staining, rinsing and drying stations
- › Programming security thanks to password-protected access
- › Low transfer of reagents through the slide holder
- › Freely selectable agitation and drip off time to further minimise the transfer of reagents
- › Performance of various staining operations by moving the slideholder forwards and backwards
- › Optional drying station
- › Optional water rinsing station
- › Optional fume hood with activated charcoal filter

Equipment

- › 23 staining stations
- › Slide holders for 30 slides
- › 23 cuvettes (standard) for 500 ml with cover
- › Memory slots for customised programming
- › Optional choice of up to 8 temperature-controlled cuvettes
- › 1 optional drying station
- › Up to 4 optional water rinsing stations

Technical specifications

- › Dimensions and weight:
160 x 35 x 28 cm (W x H x D),
approx. 25 kg
- › Safety: CE/IVD
- › Voltage: 208-240V/50Hz



CellStain® Staining systems

CellStain® 6		
Article no.	Description	
651-30	CellStain® 6	With 6 troughs (standard) for 500 ml with lid and Slide holder for 30 slides and Shortened trough for loading and unloading
652-20	CellStain® 6	With 6 troughs (240 ml) with lid and Slide holder for 20 slides and Shortened trough for loading and unloading
653	Slide dryer, adjustable from 20 °C - 80 °C (optional)	
654	Water rinse station (optional)	
675	Pressure regulator for water rinse station	
612-1	Slide holder for 30 slides	
621-1	Trough (Standard) for 500 ml with lid, for 30 slides	
658	Slide holder for 20 slides	
686-1	Trough für 240 ml with lid, for 20 slides	
690-06	Desk fume hood for CellStain® 6 with activated charcoal filter	
690AK	Activated charcoal filter	

CellStain® 15		
Article no.	Description	
665-30	CellStain® 15	With 15 troughs for 500 ml (standard) with lid and Slide holder for 30 slides and Shortened trough for loading and unloading
665-20	CellStain® 15	With 15 troughs for 240 ml with lid and Slide holder for 20 slides and Shortened trough for loading and unloading
653	Slide dryer, adjustable from 20 °C - 80 °C (optional)	
654	Water rinse station (optional)	
675	Pressure regulator for water rinse station	
612-1	Slide holder for 30 Slides	
621-1	Trough (Standard) für 500 ml with lid, for 30 slides	
690-15	Desk fume hood for CellStain® 15 with activated charcoal filter	
690AK	Activated charcoal filter	

CellStain® 23	
Article no.	Description
800-30	CellStain® 23 With 23 troughs (standard) for 500 ml with lid and Slide holder for 30 slides and Shortened trough for loading and unloading
653	Slide dryer, adjustable from 20 °C - 80 °C (optional)
654	Water rinse station (optional)
675	Pressure regulator for water rinse station
612-1	Slide holder for 30 slides
621-1	Trough (Standard) für 500 ml with lid, for 30 slides
702	Heating module with one heating trough
703	Additional heating trough per station
690-23	Desk fume hood for CellStain® 23 with activated charcoal filter
690AK	Activated charcoal filter



THARMAC® GmbH Laboratory Solutions

Commercial unit

Hasselborner Straße 19-21 » DE-35647 Waldsolms » PHONE: +49 (0) 6085 98 99 1-0
FAX: +49 (0) 6085 98 99 1-19 » MAIL: info@tharmac.de

Place of business

Borsigstraße 7A » DE-65205 Wiesbaden » PHONE: +49 (0) 6122 5 88 97-33
FAX: +49 (0) 6122 5 88 97-36 » MAIL: info@tharmac.de